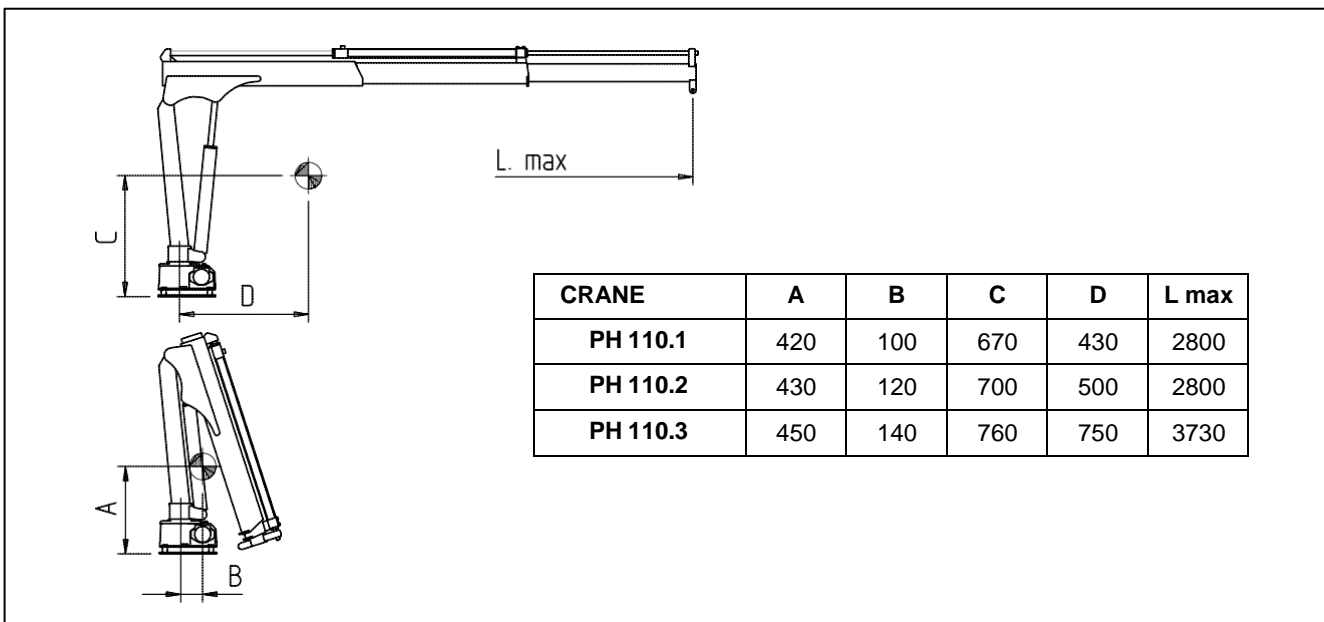
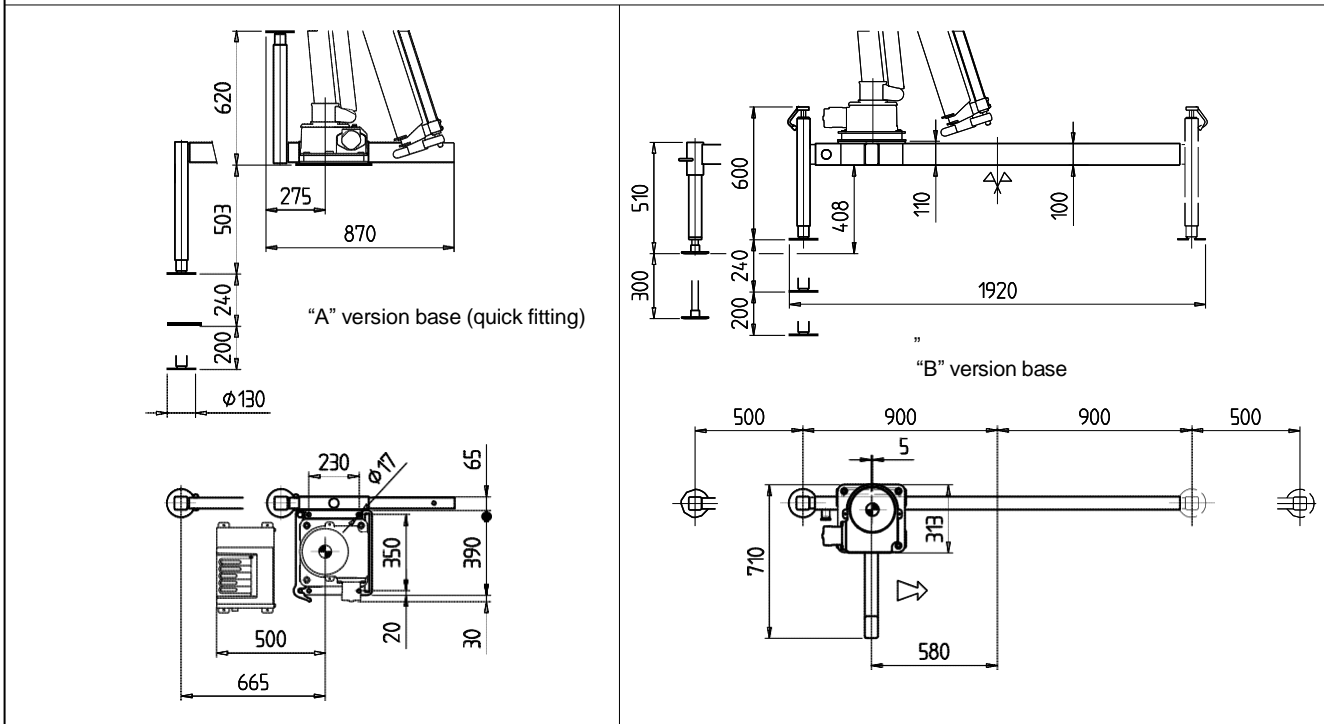
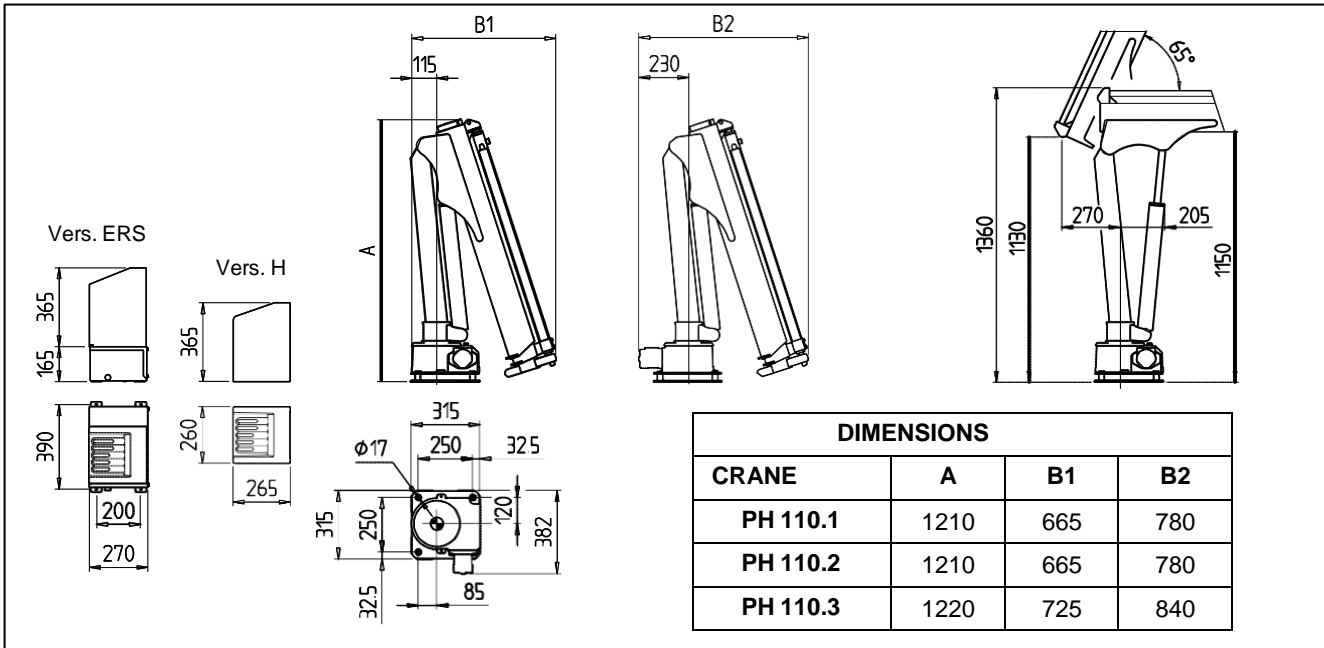


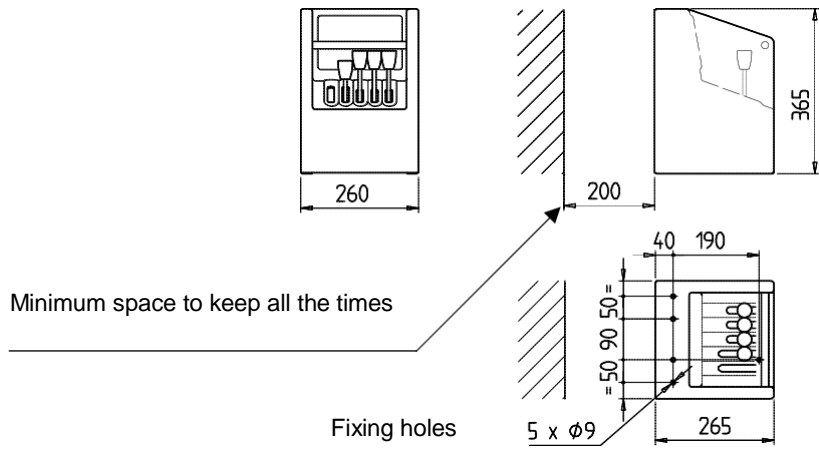
## TECHNICAL SHEET



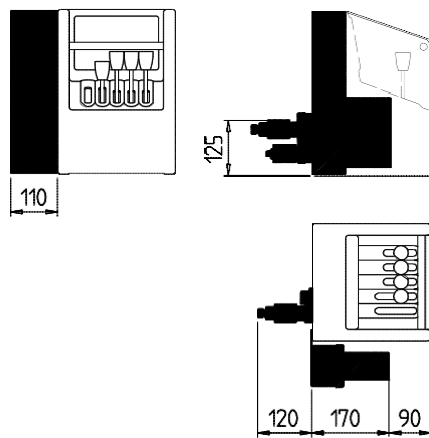
# PH 110



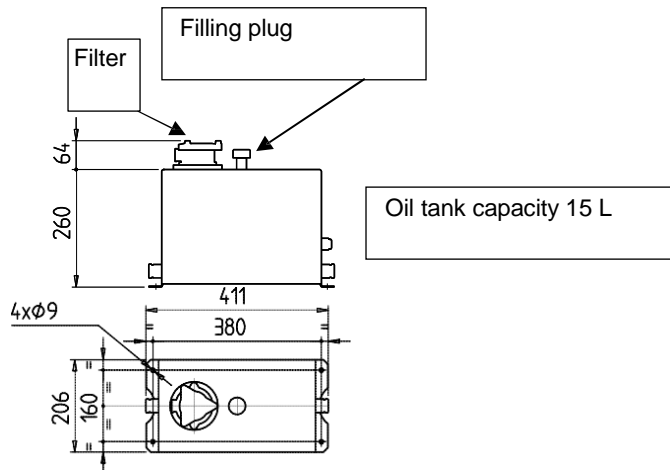
Standard control station for H version



Control station for H version with remote control



Oil tank for H version



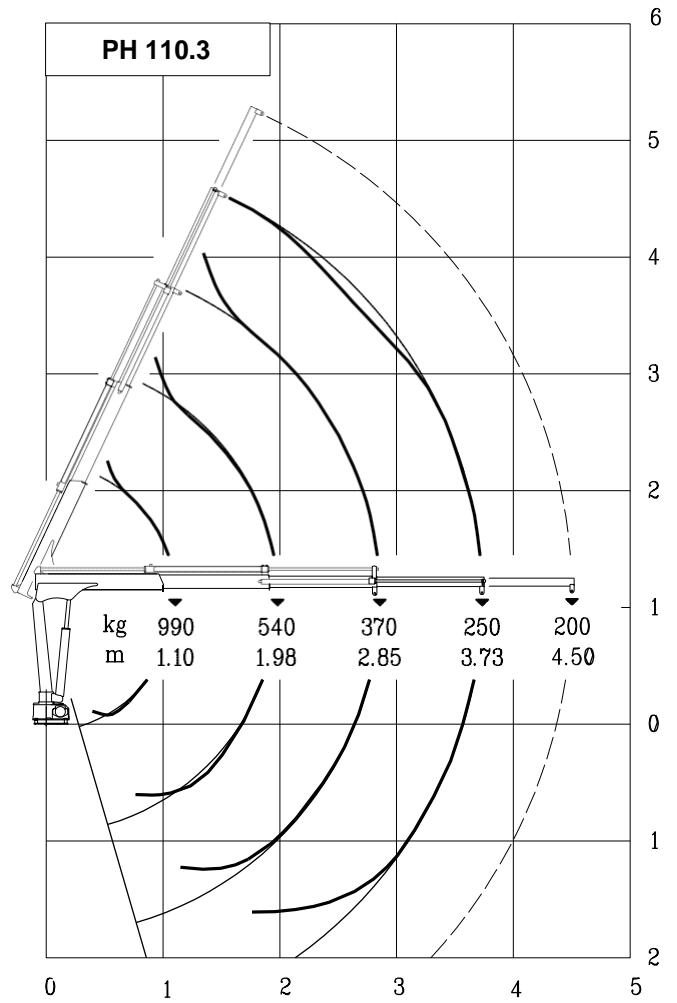
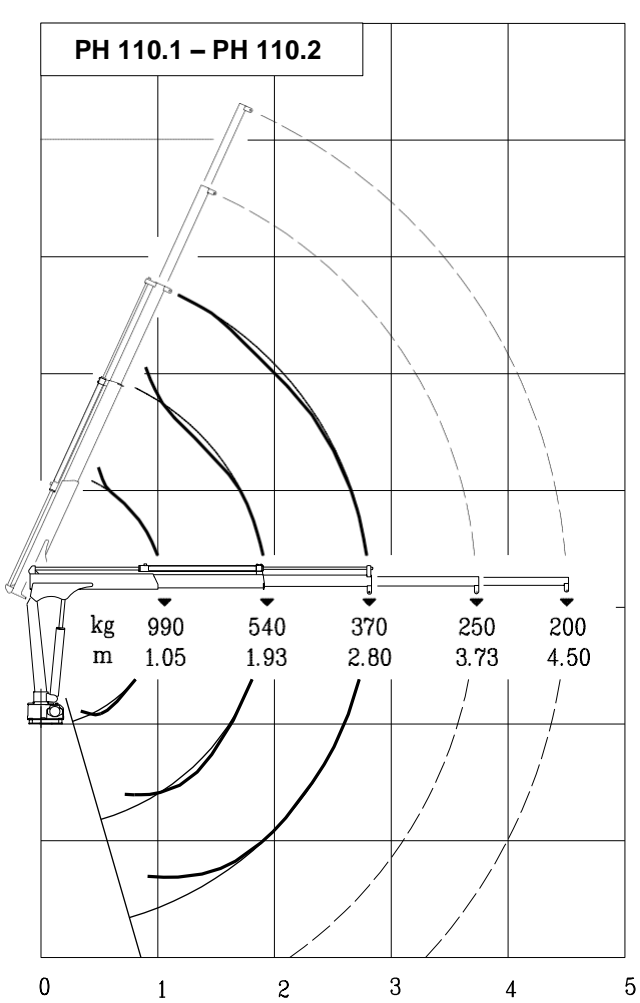
TECHNICAL DATA	U.M.	VERSION		
		PH 110.1 ERS-H	PH 110.2 ERS-H	PH 110.3 ERS-H
CRANE RATING	kNm	10		
STANDARD EXTENSIONS Nr. (HYDRAULICS)	N°	1H+1M	2H	3H
STANDARD OUTREACH	m	2.80	2.80	3.73
SLEWING ANGLE	°	330°		
MAXIMUM ANGLE SLOPE	°	5°		
SLEWING TORQUE	kNm	1.2		
MAX. LIFTING HEIGHT FROM CRANE BASE	m	3.4	3.4	4.4
SUGGESTED OIL FLOW	l/min	4-6		
MAX. WORKING PRESSURE	bar	200		
BASIC CRANE WEIGHT VERS. "H" VERS. "E"	kg	105 125	125 145	155 175
"A" VERS. BASE WEIGHT (QUICK FITTING , 1 MECH. JACK)	kg	40		
"B" VERS. BASE WEIGHT WITH EXTENDABLE STABILIZERS	kg	64-88		
BEAM WEIGHT WITH 2 EXTENDABLE STABILIZERS	kg	58-62		
MOTOR ABSORPTION FOR ELECTROHYDR. CRANE 12V	A min/max	70/160	70/160	70/160
MOTOR ABSORPTION FOR ELECTROHYDR. CRANE 24V	A min/max	35/75	35/75	35/75

SPECIFICATIONS	U.M.	
MAX. WINCH SINGLE LINE CAPACITY (3 <sup>rd</sup> LAYER)	kg	300
ROPE DIAMETER	mm	5
ROPE LENGTH	m	12
WINCH KIT WEIGHT	kg	15

VERSION	DESCRIPTION
"ERS" 12/24V	ELECTROHYDRAULIC
"H"	HYDRAULIC

OPERATING TIMES										
VERS.	SLEWING (rpm)	LIFTING (sec)		LOWERING (sec)	EXTENSION OUT (sec)			EXTENSION IN (sec)		
		p min	p max		110.1	110.2	110.3	110.1	110.2	110.3
"ERS" 12/24	2.5	13	30	14	7	18	25	5	13	18
"H" (PTO)	2.5	13		14	7	18	25	5	13	18

p min. working pressure  
p max. working pressure



**Lifting class HC1 – HD4/B2**