



Our big three

**Three larger hydraulic cranes combining value for money with unique safety features including load limiting devices, load limit indicator and remote control operation all as standard.**

### Features

- Low crane weight of 175kg to 263kg
- Remote control
- Compact design – folds down to king post, maximising floor space
- Integrated, fully enclosed oil tank and motor pump unit with easy access for servicing
- Fully controlled hydraulic slewing
- Two extensions with manual or hydraulic operation
- Easily installed at our factory or by an approved Penny Hydraulics converter

### Options

- 12 or 24v operation from vehicle battery
- Hydraulic or electric winch
- Manual or hydraulic stabiliser leg
- Additional pillar height
- Crane slew stops
- Crane attachments available to suit application
- Retractable lifting hook
- Battery protection
- Lifting accessory kit



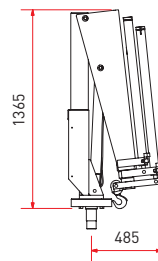
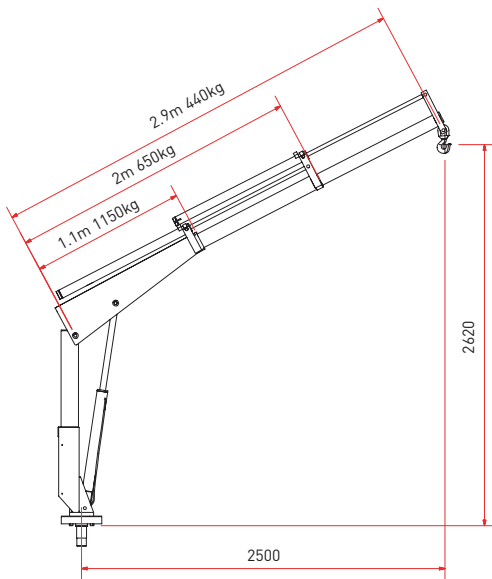
### Applications

- Highways
- Construction
- Utilities
- Fire & rescue

#### V12

##### Weights & measurements

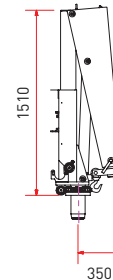
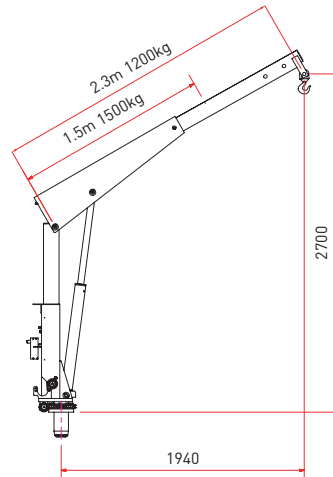
Crane	184kg
Above floor subframe	70kg
Manual support leg	12kg
Hydraulic support leg	27kg
Leg beam	11kg
Rating	1.26 tonne metres



#### V15

##### Weights & measurements

Crane	175kg
Above floor subframe	70kg
Manual support leg	12kg
Hydraulic support leg	27kg
Leg beam	11kg
Rating	2.25 tonne metres



#### V20

##### Weights & measurements

Crane	263kg
Above floor subframe	70kg
Manual support leg	12kg
Hydraulic support leg	27kg
Leg beam	11kg
Rating	2.8 tonne metres

