



Small enough to fit,
strong enough to lift

The new HS400/V12 tracked crane is a revolution in the small plant market. At just 790mm wide and 1844mm high in its stowed position, the unit is small enough to fit through a standard doorway, but punches well above its size with a lifting capacity of 630kg. Ideal for confined sites and even indoor applications thanks to its battery powered, low vibration chassis and compact, heavy duty crane, the V12 Track Crane quite literally gets to places nothing else can reach.

CHASSIS UNIT FEATURES

- Asincrono electric motor
- n.4 - 12V 200Ah/6 hour duration battery
- Low/high battery life indicator
- 4,75 kW - 3600 g/1' maximum power
- 3600 g/1' rpm
- Electric starting
- 2x10.5 l/1' pumps capacity
- 110 bar pressure
- 1.7 km/h translation speed
- 12.5 litre hydraulic oil tank

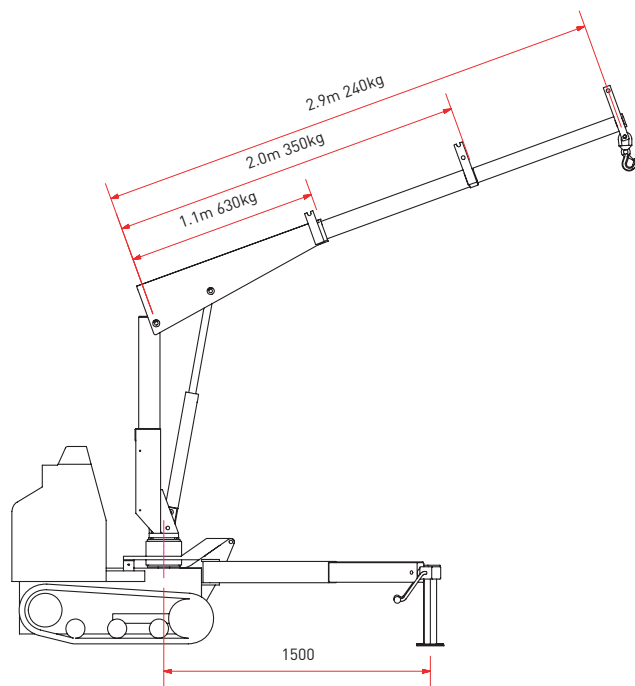
V12 CRANE UNIT FEATURES

- 240kg to 630kg maximum working load
- Easily installed and dismantled from the chassis unit
- Remote control
- Low weight of 290kg including subframe and support legs
- Two extensions with hydraulic operation
- Fully controlled 90° hydraulic slewing
- Integrated, fully enclosed oil tank and motor pump unit with easy access for servicing
- Compact design - folds down to king post
- Optional electric winch
- Battery protection
- Lifting accessory kit



Applications

- Plant Hire
- Construction
- Utilities
- Stonemasons
- Arboriculture



Weights & measurements

Tracked unit	540kg
Crane & subframe	290kg
Rating	0.70 tonne metres

