



Controlled precision

The new SwingLift FV500 has hydraulic slew, boom raise, lower and extension for controlled, precise and safe handling. Its 500kg capacity hoist allows vertical below-ground handling making it the ideal solution for local authorities, highways and utilities.

Features

- Suitable for van and chassis applications
- Low crane weight, maximising payload
- Compact design, integral oil tank and motor pump unit maximises load space
- Remote control as standard
- Fully hydraulic operation - boom raise, lower, extension and slew
- Electric winch for below ground applications
- Built in overload protection as standard
- Lifts 500kg in all boom positions

Options

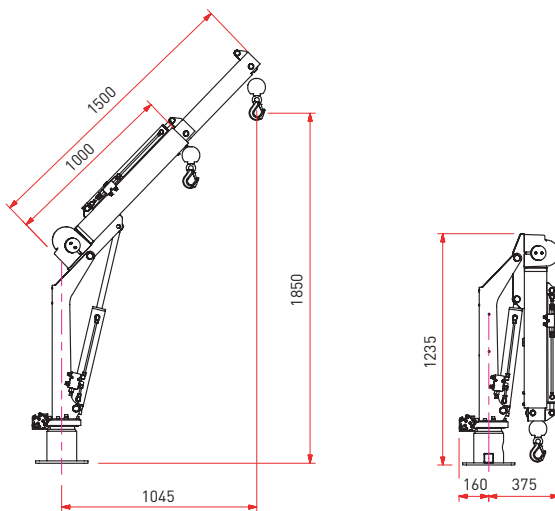
- Mounting frame with integral support legs
- Manual or hydraulic stabiliser legs
- 12 or 24v operation from standard vehicle battery
- Extra rope length up to 40'/12m
- Additional pillar height
- Crane slew stops
- Battery protection
- Lifting accessory kit



Applications

- Highways
- Construction
- Utilities
- Fire & rescue

FV500 pickup, dropside & flatbed type

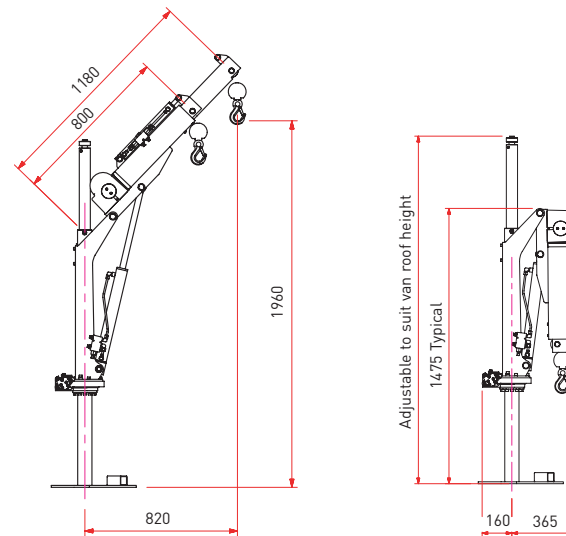


Weights & measurements

Crane	85kg
Support leg	8kg
Rating	0.75 tonne metres

Lifts 500kg in all positions

FV500 van type



Weights & measurements

Crane	95kg
Support leg	8kg
Rating	0.75 tonne metres

Lifts 500kg in all positions