



For compact power

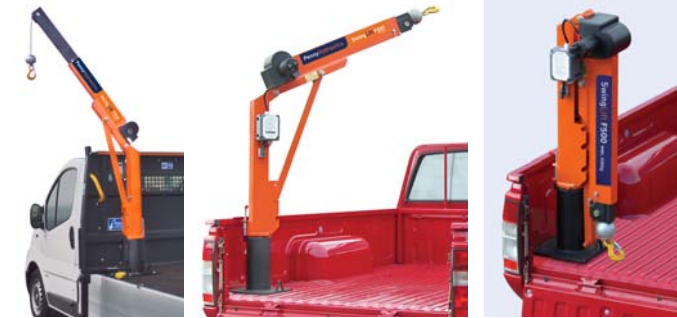
A compact, 500kg capacity electric crane for pickups, dropsides and flatbeds.

Features

- Lifts 500kg in all configurations of boom position
- Remote control
- Overload protection
- Compact design folds away when not in use
- Low crane weight from approximately 73kg
- Manual boom extension with three height settings
- Easily installed at our own premises, on site or by a vehicle body builder

Options

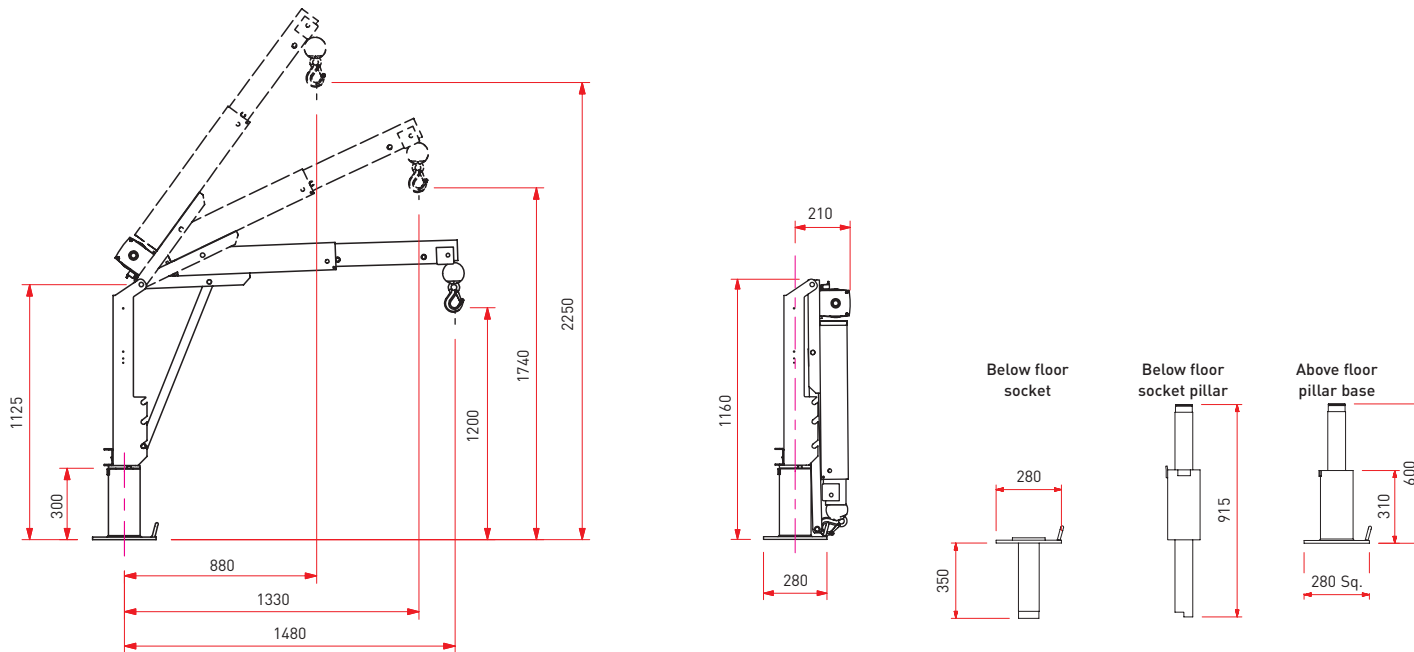
- 12v or 24v operation from vehicle battery
- Manual or hydraulic stabiliser leg
- Radio remote control
- Fitting kit
- Extra rope length up to 12m/40'
- Additional pillar height
- Battery protection
- Lifting accessory kit



Applications

- Highways
- Construction
- Utilities
- Railways

F500 pickup, dropside & flatbed



Weights & measurements

Crane section	73kg including pillar base
Support leg	8kg
Rope length	6m (20') standard
Rating	0.75 tonne metres