



**Rear loading redefined**

**A lightweight and compact lifting platform for loading 4x4 pickups and Land Rovers.**

### Features

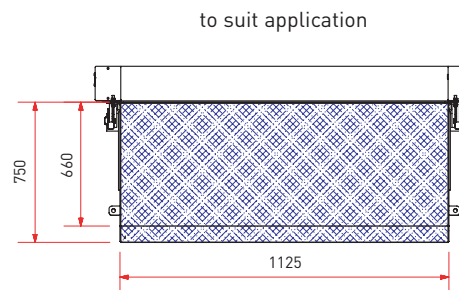
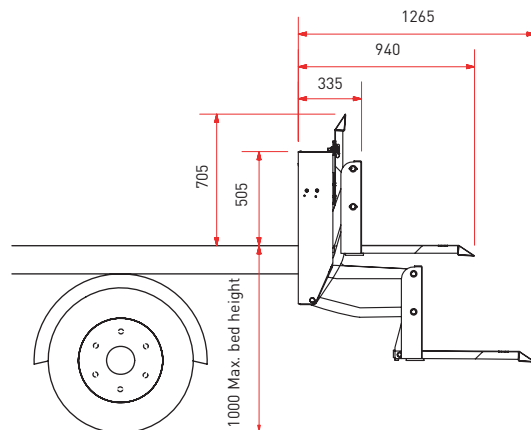
- Excellent off-road ground clearance
- Specifically designed to suit pickup and dropside vehicles
- No under-slung columns, ropes or chains
- Cantilever action means standard tow bars can be fitted
- Low self-weight maximises payload
- Standard 500kg MWL
- A wide range of platform materials are available including steel, mesh and aluminium
- A wide range of platform sizes tailored to suit your requirements, including folding platforms

### Options

- Radio remote control
- Bespoke platform sizes
- Folding or drop-in guard frames
- Manual back-up hand pump
- Battery protection

### Applications

- Highways
- Construction
- Utilities
- Railways
- Tyre industry



### Platform range

- |  |       |
|--|-------|
| • 750mm steel platform                 | 145kg |
| • 800mm galvanised steel mesh platform | 138kg |
| • 600mm aluminium platform + 200mm toe | 135kg |